

LES ÉMÉRGENCES



Votre maison nouveaux horizons

Au pied du Jura, face au Val-de-Ruz,
à deux pas du village des Geneveys-sur-Coffrane,
à quelques minutes des villes,
une nouvelle manière d'habiter l'espace,
de s'enraciner dans sa terre.





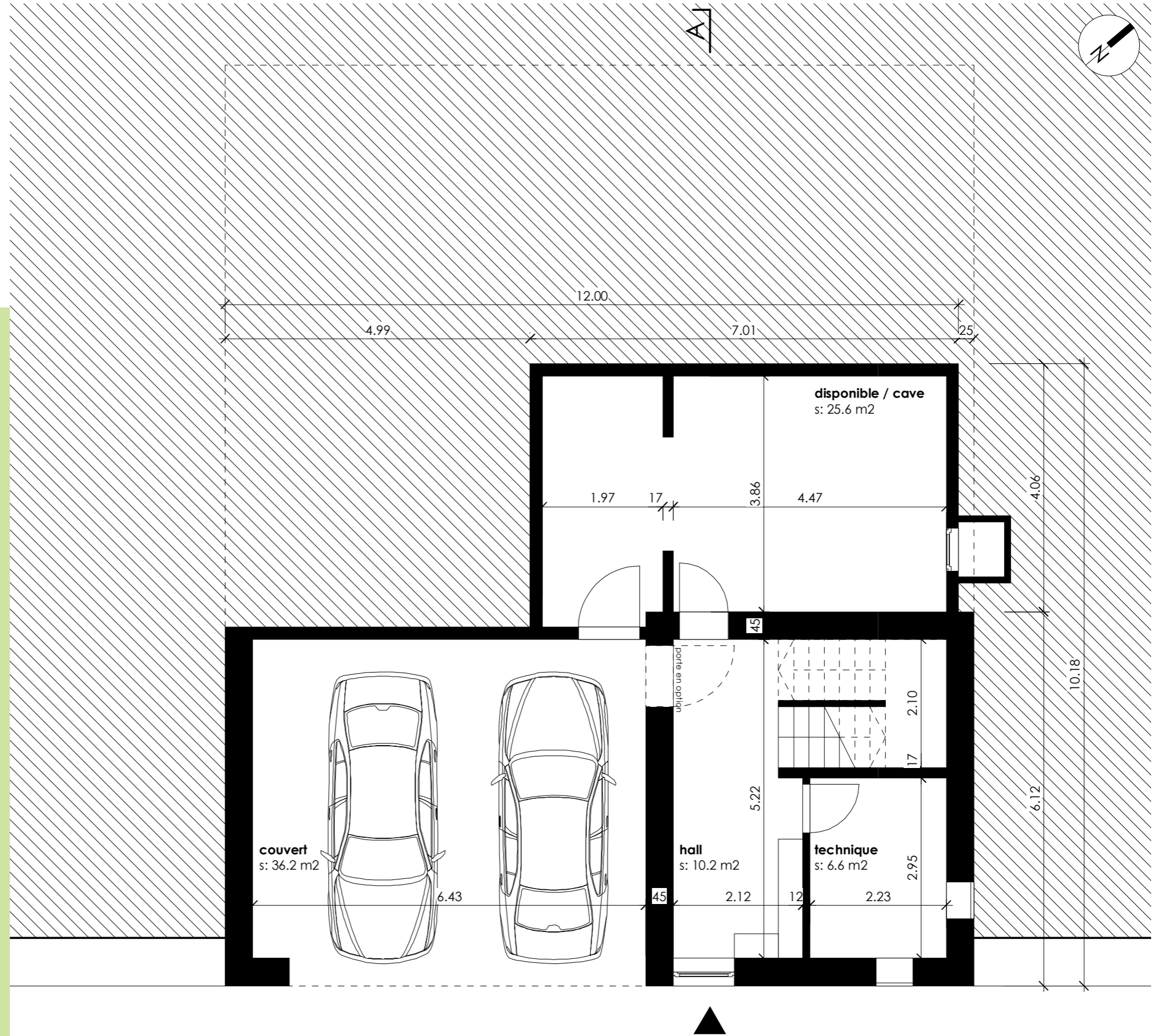
Rez-de-chaussée
1:100

Surfaces habitables
Hall: 10.2 m²
Technique: 6.6 m²
Total: 16.8 m²

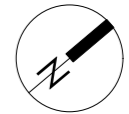
Surfaces annexes
Disponible/cave:
25.6 m²
Couvert: 36.2 m²

Surface totale:
78.6 m²

Villa type I



A



**Étage
1:100**

Surfaces habitables

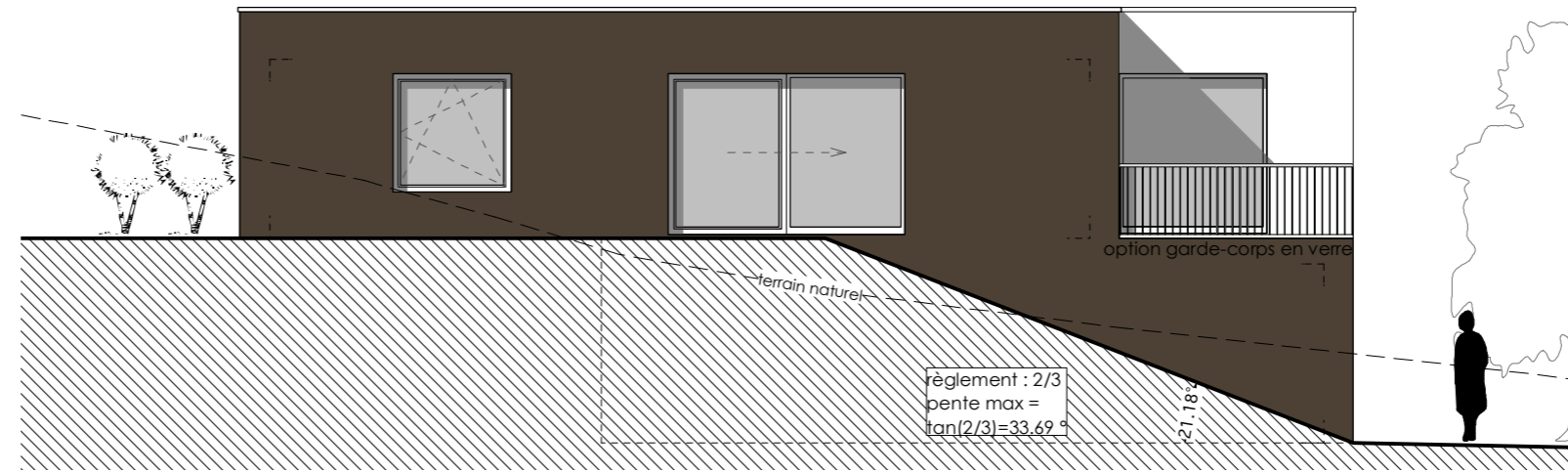
- Escalier: 7.1 m²
- Cuisine/manger: 22.9 m²
- Séjour: 35.2 m²
- Bureau: 10.1 m²
- Chambre 1: 12.0 m²
- Chambre 2: 15.2 m²
- Bain: 5.0 m²
- Chambre 3: 11.9 m²
- Couloir: 13.6 m²
- Douche: 5.0 m²
- Buanderie: 4.3 m²
- Total: 142.3 m²**

Surfaces annexes

- Balcon: 12.9 m²
- Terrasse en option: 19.8 m²

Surface totale:
175.0 m²

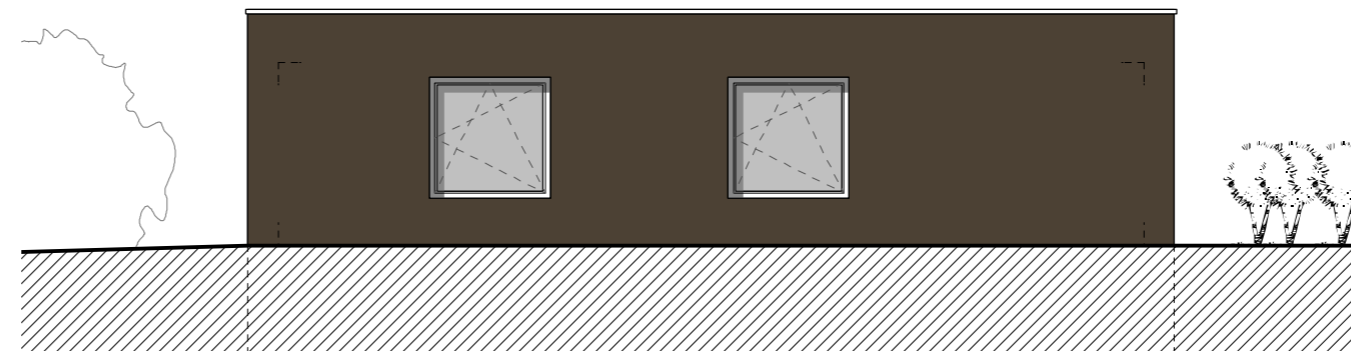




Façade Ouest



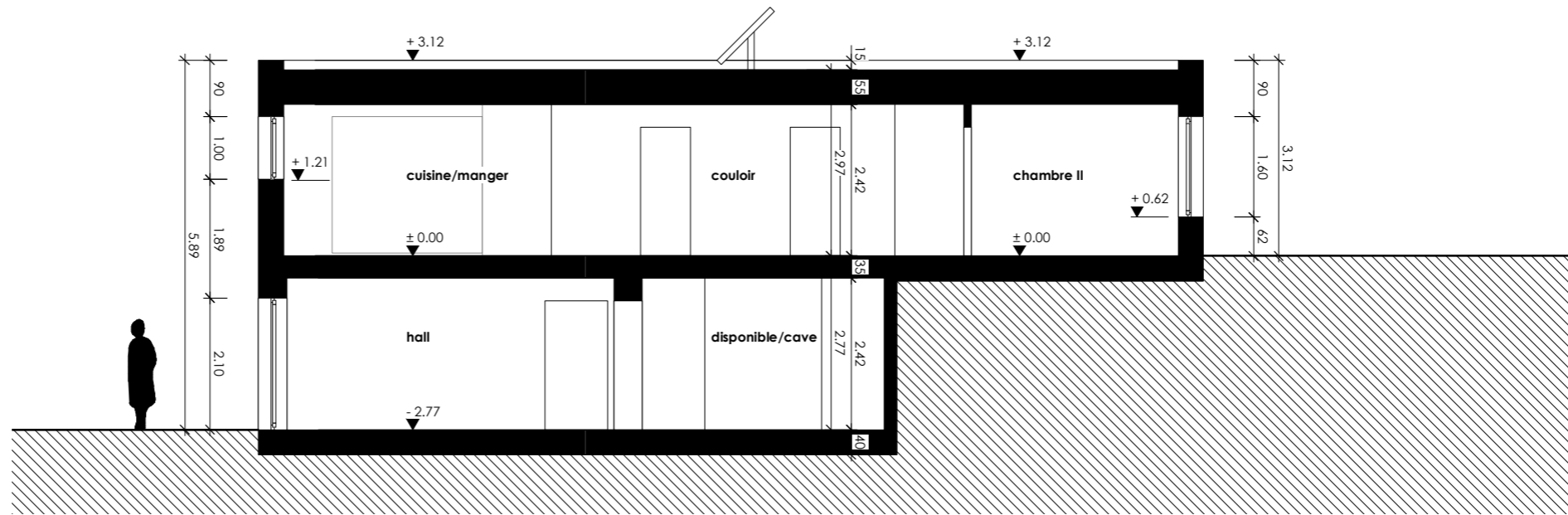
Façade Sud



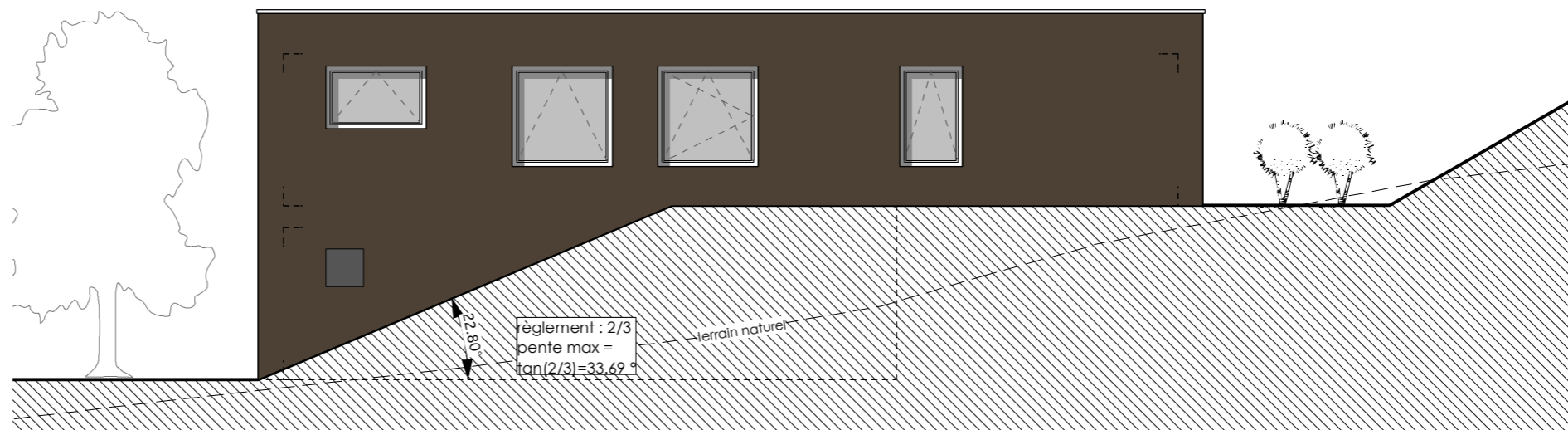
Façade Nord

Villa type I





Coupe



Façade Est





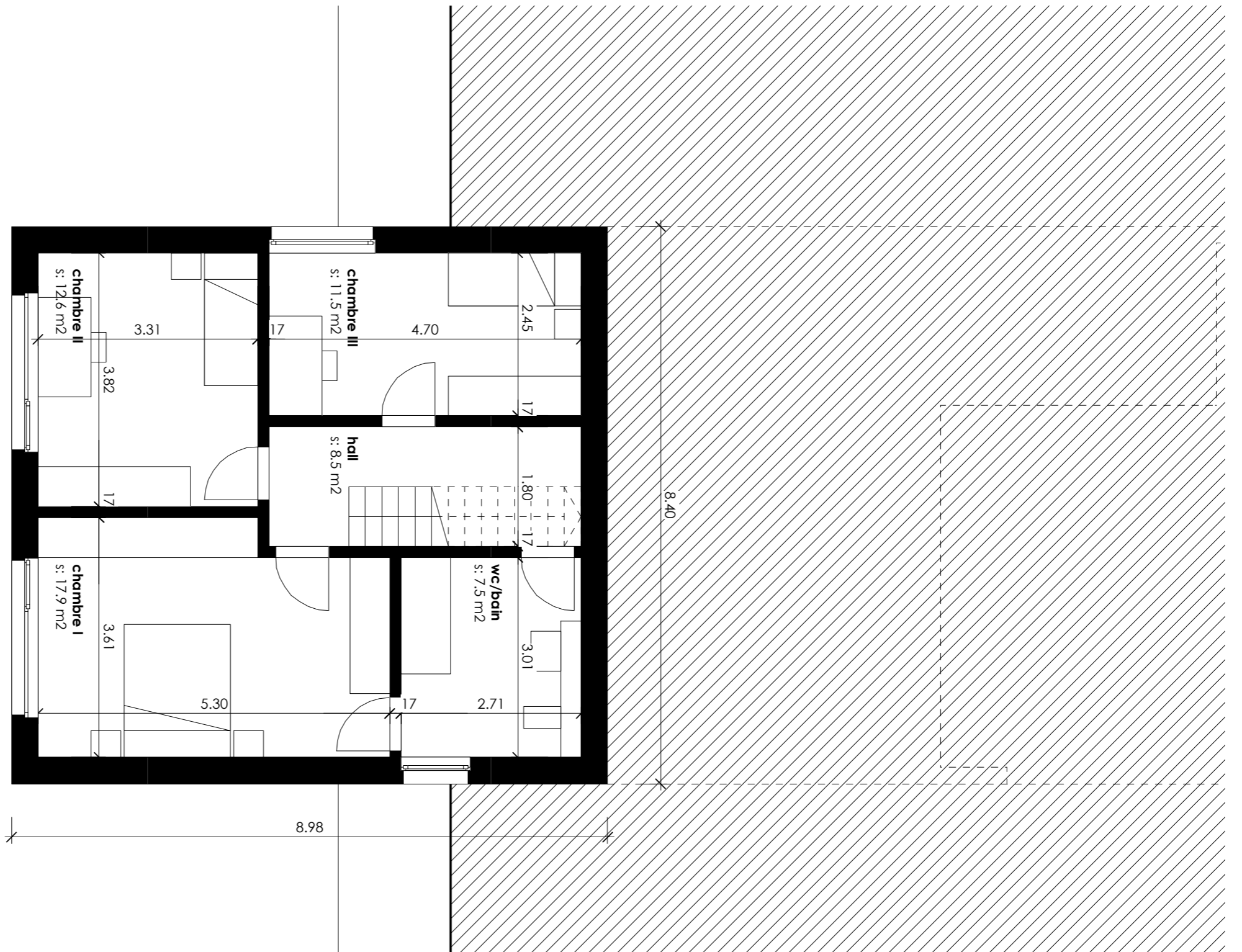
Rez-de-chaussée
1:100

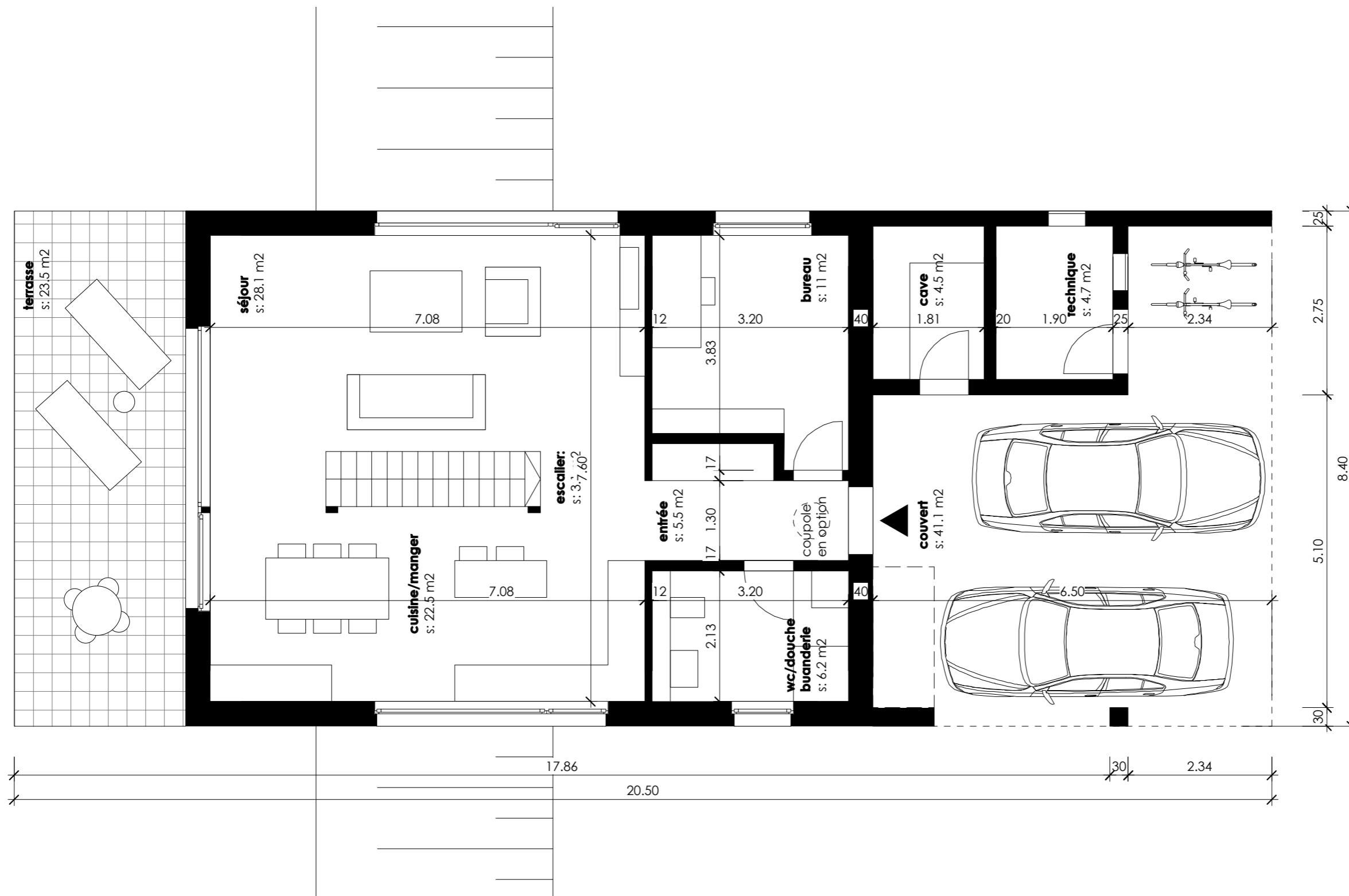
Surfaces habitables

Hall: 8.5 m²
WC/bain: 7.5 m²
Chambre 1: 17.9 m²
Chambre 2: 12.6 m²
Chambre 3: 11.5 m²

Surface totale:
58.0 m²

Villa type II



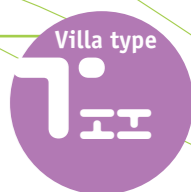


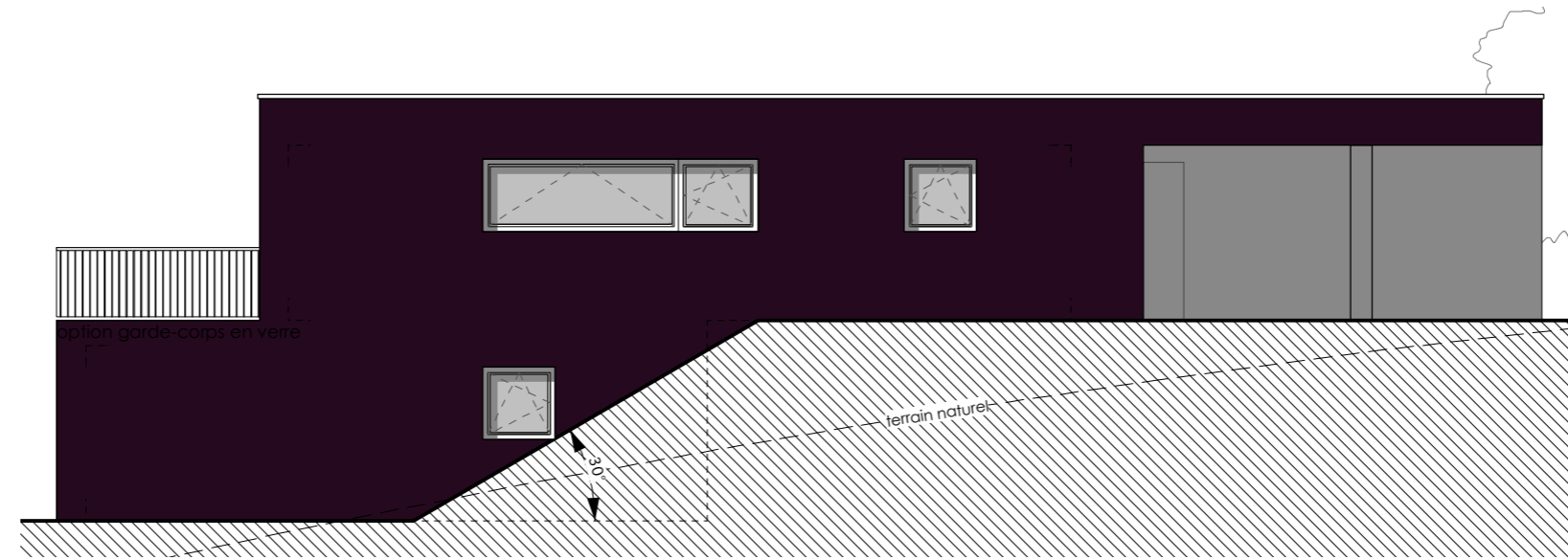
**Etage
1:100**

- Surfaces habitables**
 Bureau: 11.0 m²
 Hall d'entrée: 5.5 m²
 WC/douche/buanderie: 6.2 m²
 Cuisine/coin à manger: 22.5 m²
 Séjour: 28.1 m²
 Escalier: 3.1 m²
Total: 76.4 m²

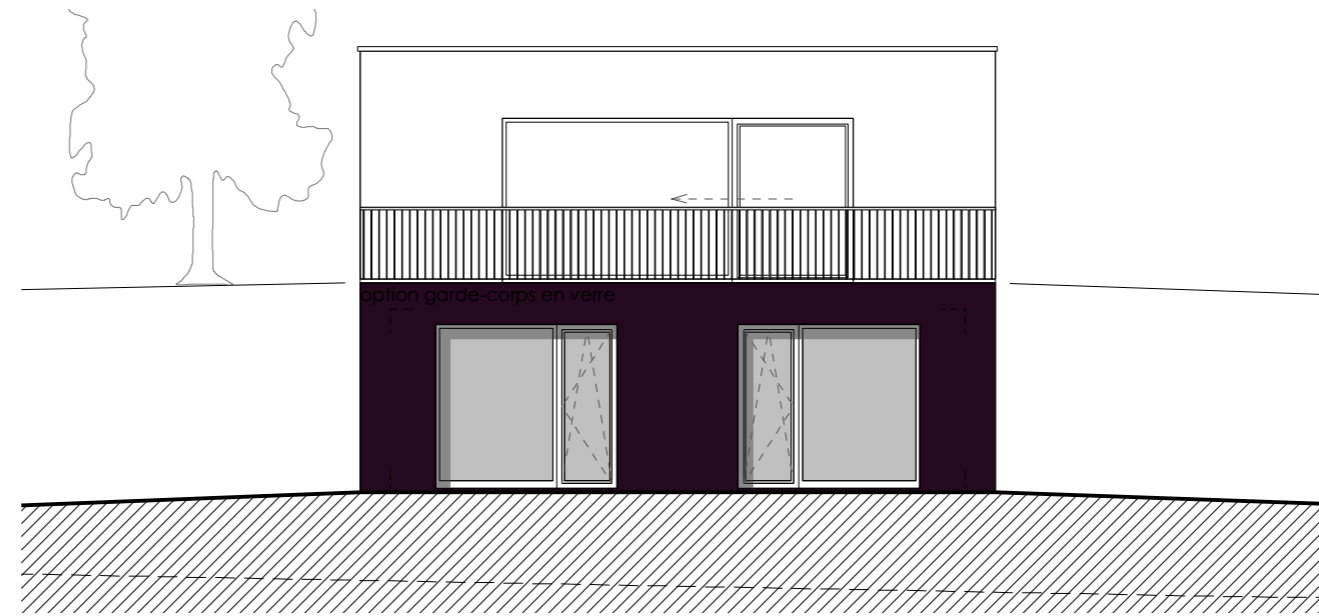
- Surfaces annexes**
 Technique: 4.7 m²
 Cave: 4.5 m²
 Couvert: 41.1 m²
 Terrasse: 23.5 m²

**Surface totale:
150.2 m²**





Façade Est



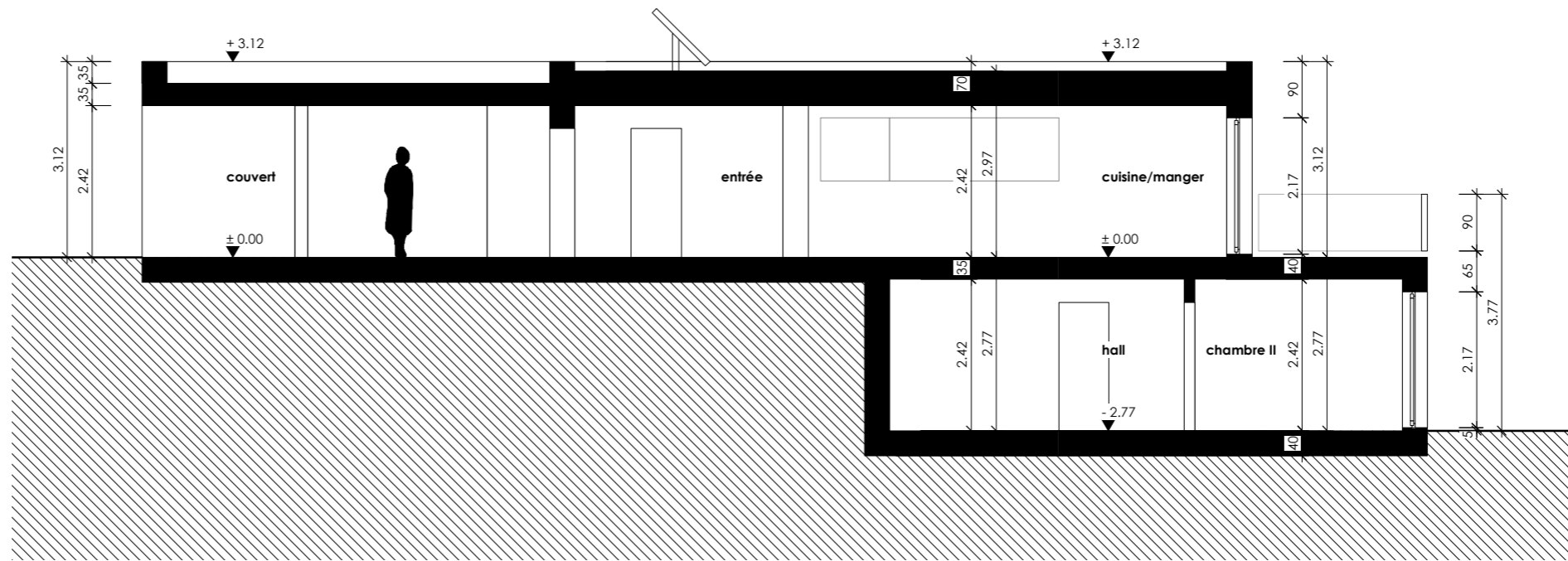
Façade Sud



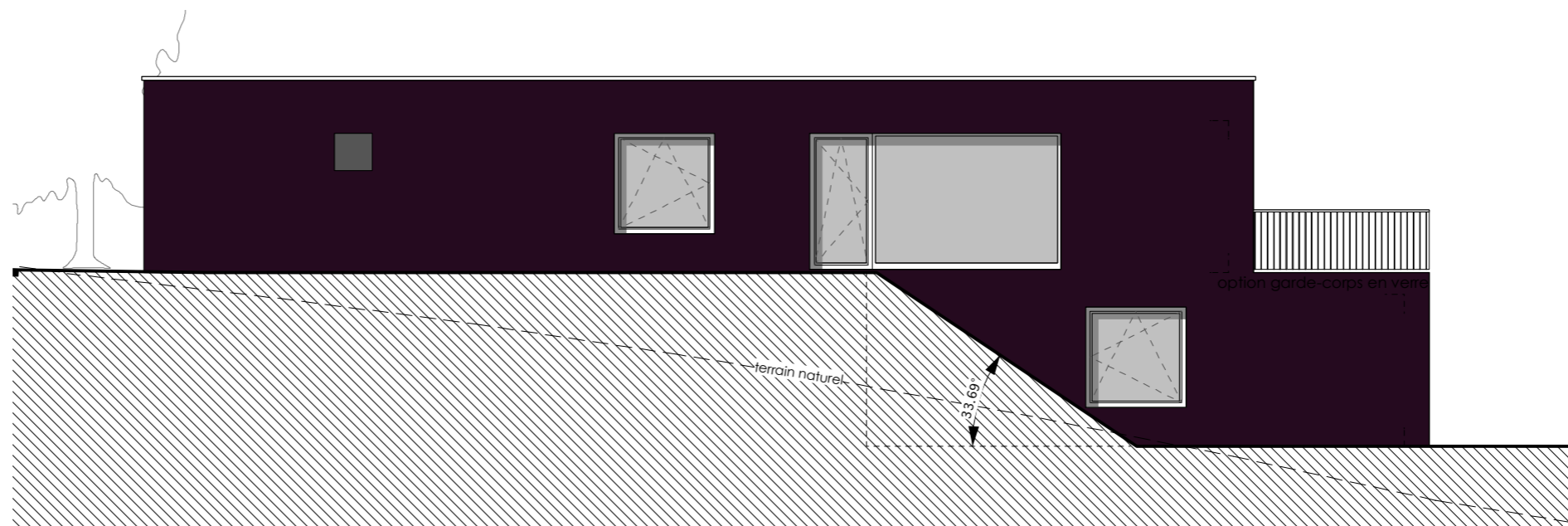
Façade Nord

Villa type II





Coupe



Façade Ouest



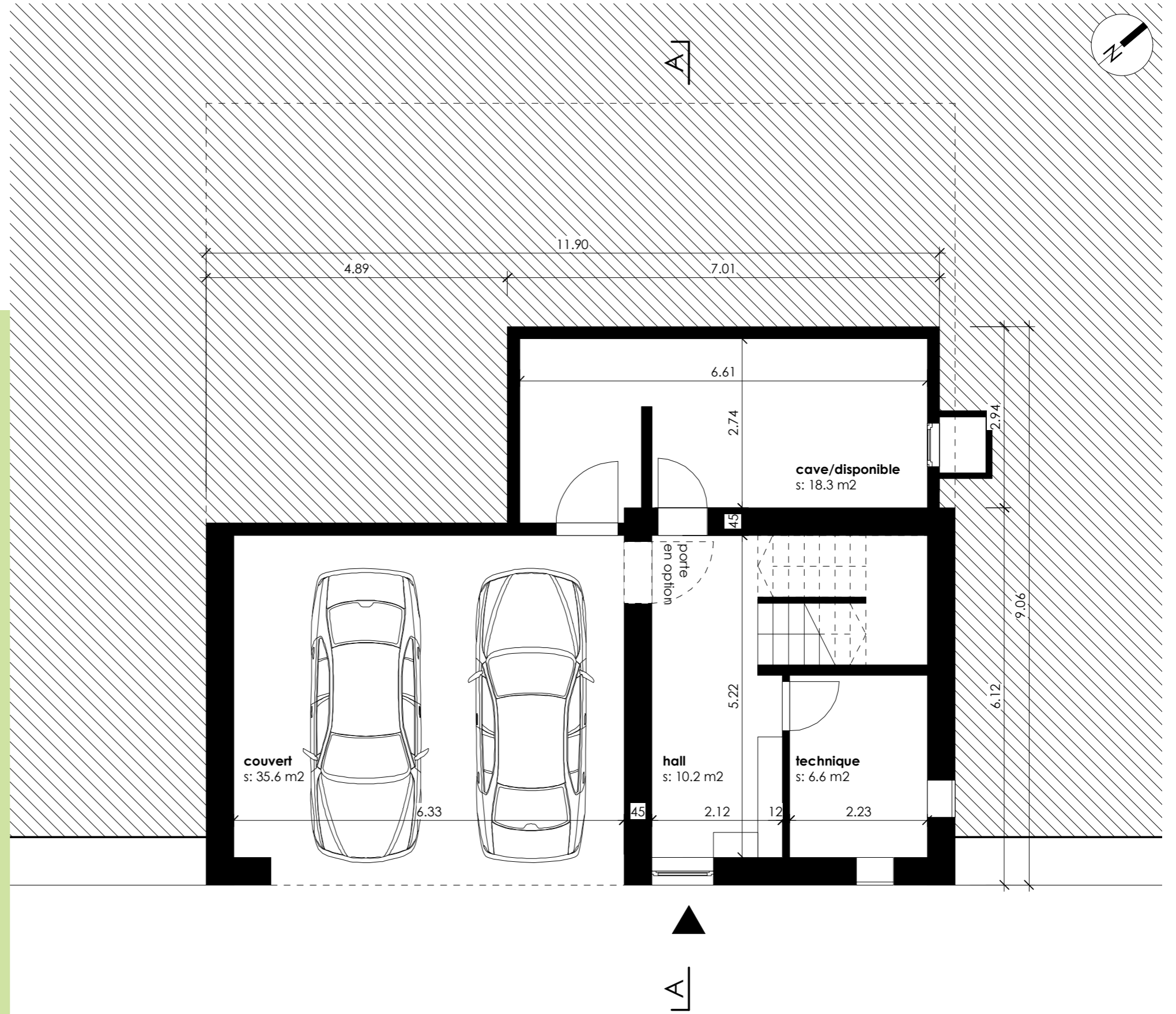
Rez-de-chaussée
1:100

Surfaces habitables
Hall: 10.2 m²
Technique: 6.6 m²
Total: 16.8 m²

Surfaces annexes
Disponible/cave:
18.3 m²
Couvert: 35.6 m²

Surface totale:
70.7 m²

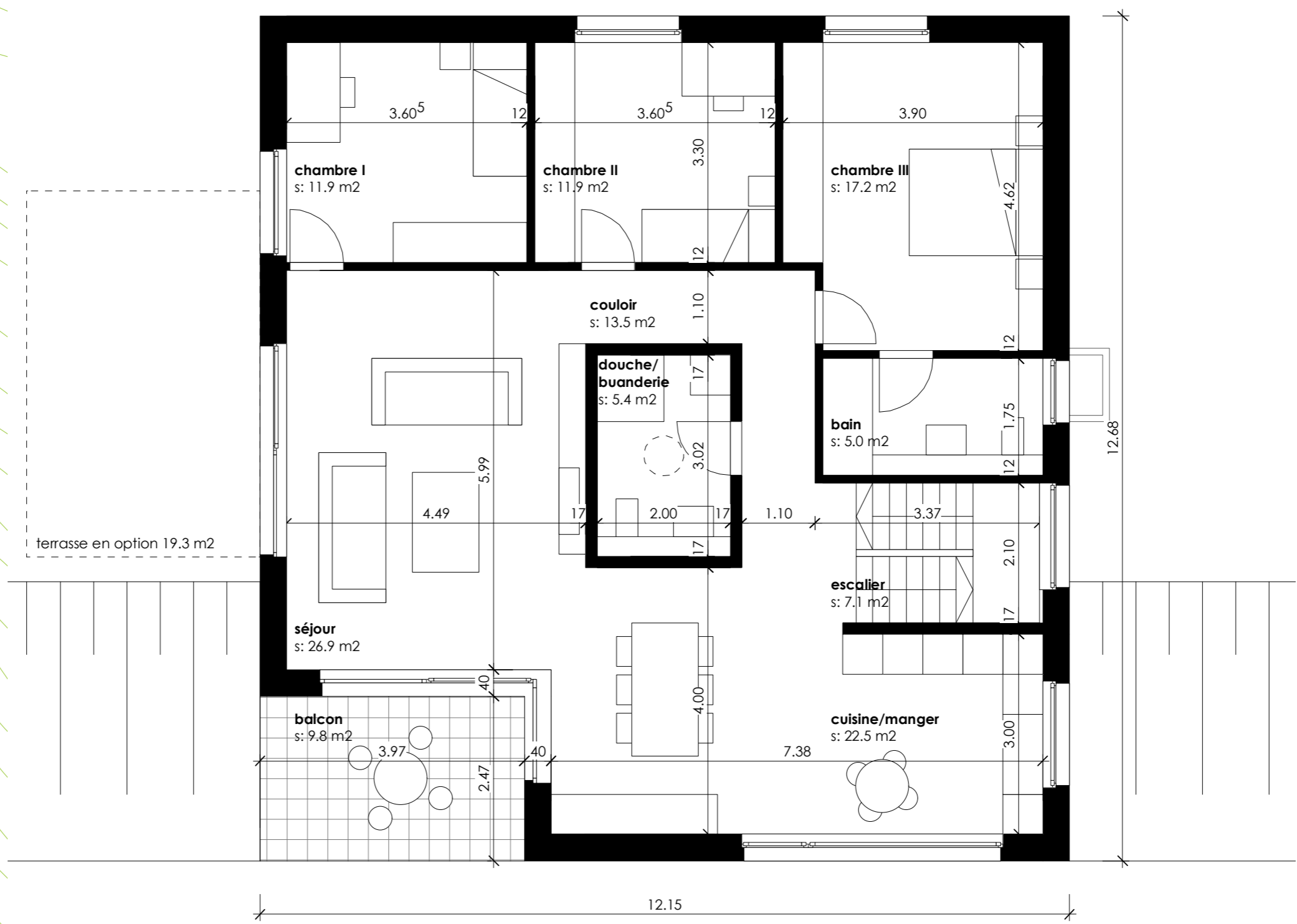
Villa type III





A]

[A



**Étage
1:100**

Surfaces habitables

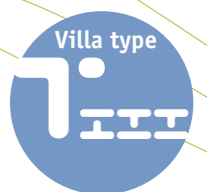
- Escalier: 7.1 m²
- Cuisine/manger: 22.5 m²
- Séjour: 26.9 m²
- Chambre 1: 11.9 m²
- Chambre 2: 11.9 m²
- Chambre 3: 17.2 m²
- Bain: 5.0 m²
- Couloir: 13.5 m²
- Douche/buanderie: 5.4 m²
- Total: 121.4 m²**

Surfaces annexes

- Balcon: 9.8 m²
- Terrasse en option: 19.3 m²

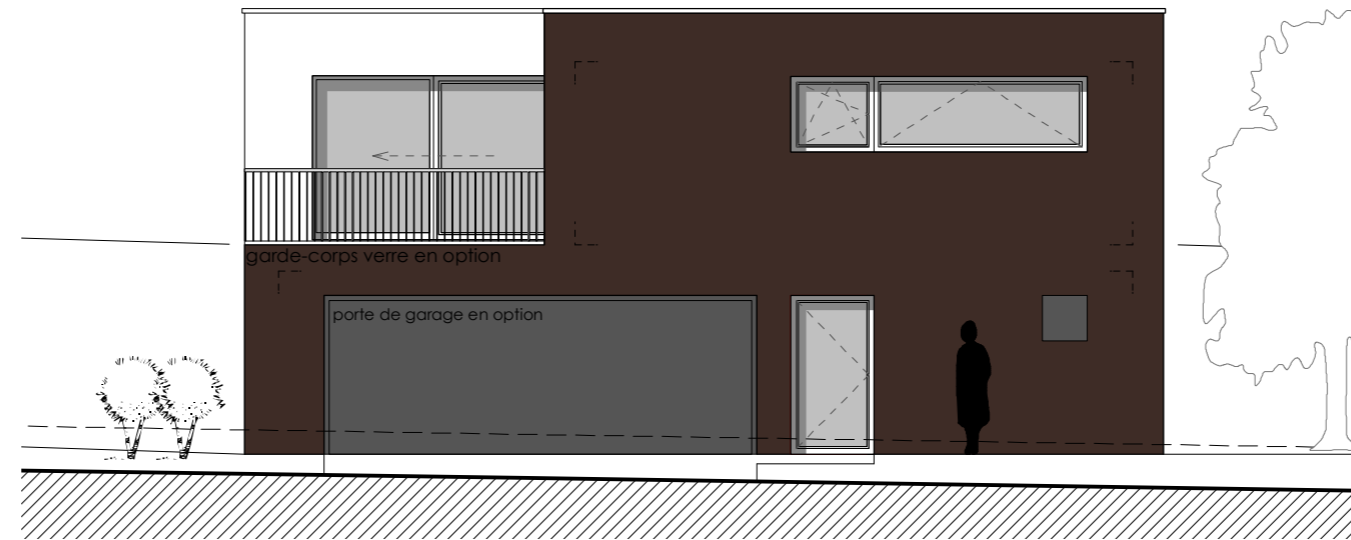
**Surface totale:
150.5 m²**

terrasse en option 19.3 m²

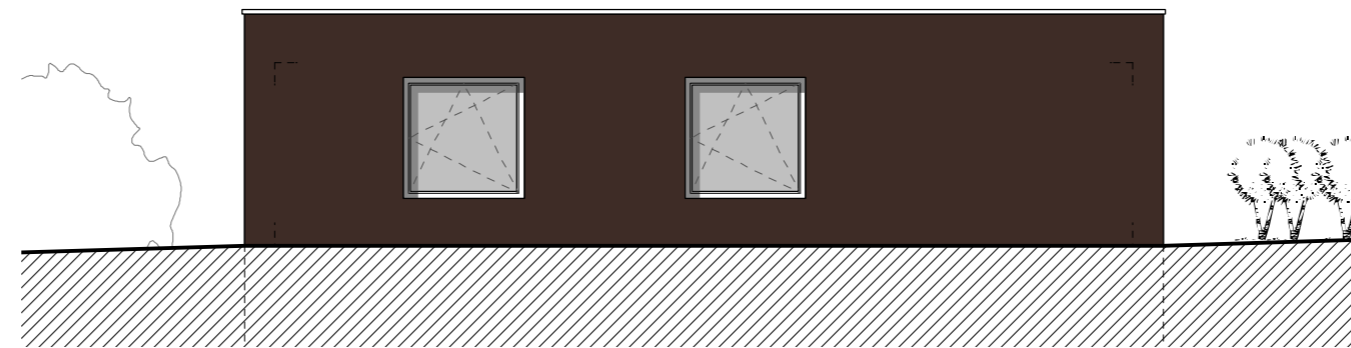




Façade Ouest



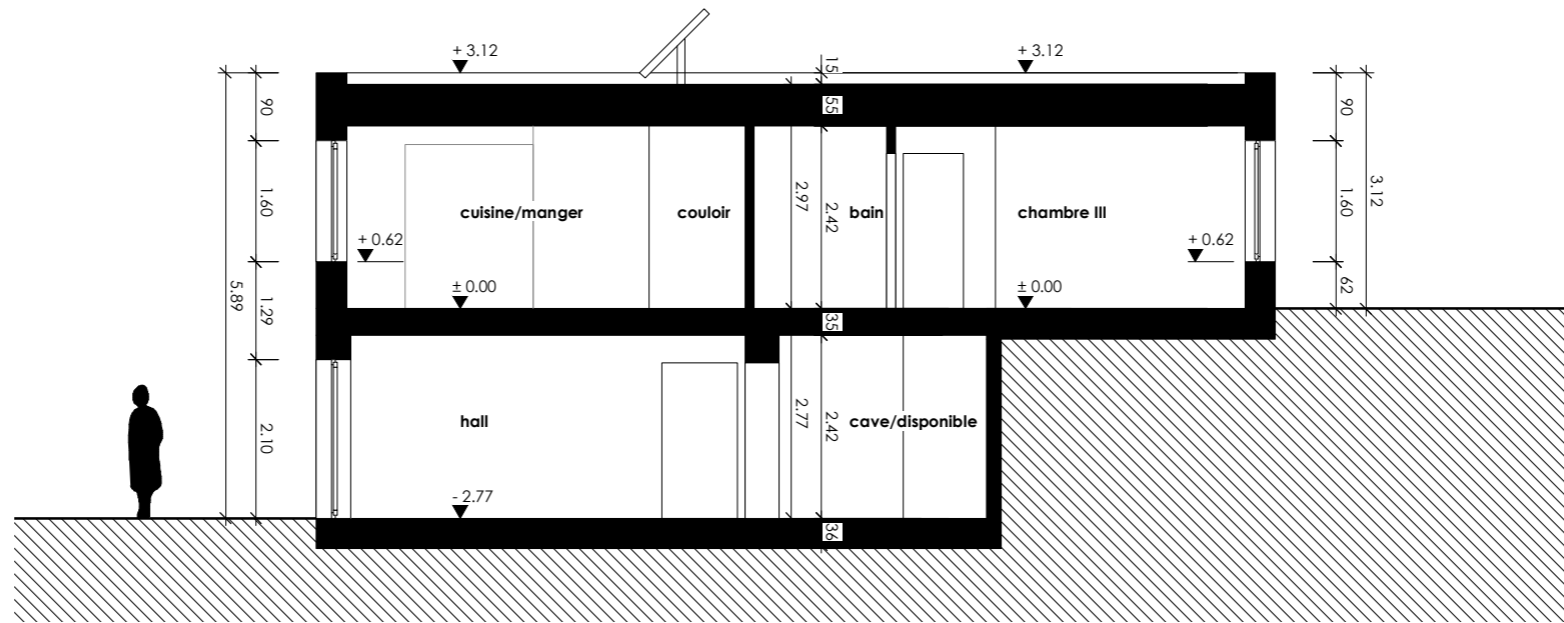
Façade Sud



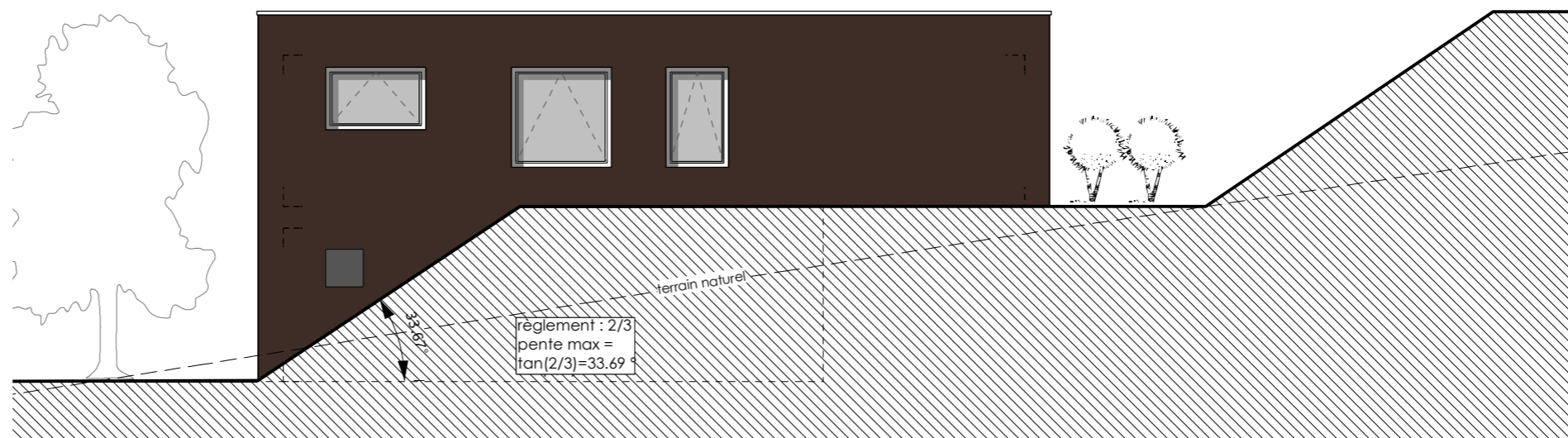
Façade Nord

Villa type III





Coupe



Façade Est

